

# AGED.

## DRY. AGING. SOLUTIONS.

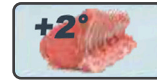


## QUICK SETUP GUIDE

'System Model' MEAT

1

- Place racking in cabinet with enough space for product height
- Connect "Oxygenklima" device to white plug and clear air hose at top of unit and clear air hose
- Plug in and turn power 'ON'
- Select "Programs" in centre of `main screen
- Select required program (for beef and normal dry aging conditions)
- Place meat in cabinet
- Your program will now begin and run for a pre-set 60 days



2

### CONNECTING WATER - HUMIDIFIER

- Connect hose from water connection to filter blue head
- Connect filter head to filter and switch to 'Number 1' so that the arrow is in the direction of water flow.
- With a container to catch excess water, turn water on and let water fill the filter unit to purge any air
- Turn water off once water has flowed freely through unit and out of the discharge outlet
- Connect black hose from unit to the litre counter
- Connect litre counter to blue connection on water filter
- Secure all connections and turn water connection back on

3

### TO TEST HUMIDIFIER

- On touch screen go to "Settings"
- Scroll down and select "Password"
- Scroll down and select "Maintenance Login"
- Enter "0100" for default password
- Back at main screen press " Settings"
- Scroll down and select "THR configure"
- Select ENU (Humidifier enable)
- Select "Enable" (*\*make sure unit is not left on "Standby" after configuration*)
- On touch screen select "Settings"
- Scroll down and select "Password"
- Select "Maintenance Login"
- Enter "0100" for default password
- Return to main screen and select " Settings"
- Scroll down and select "Test Centre"
- Select "Test digital outputs"
- Select "3,4,5 and 7"
- Await for Humidifier to generate steam (can take up to 2 minutes)
- Select 'back' to go to main menu to take off 'Standby'